



Little Tilebarn
Ewens Gardens, Barnham, PO22 0HA

Little Tilebarn

A popular private road within easy striking distance of the bustling village centre, with railway station which is direct to London Victoria. This attractive home offers versatile accommodation and comprises of two large bedroom suites, both with en-suite bathrooms, three reception rooms including a triple aspect living space extending to almost 40ft, and an open plan kitchen/utility room with water softener. To the front of the property is a private driveway, with an extensive shingle drive and access to the large detached garage with power and lights. The rear gardens are well stocked with a large decked area, water features, hot tub, shed and summer house with power.

- Popular village location
- Private road
- Versatile accommodation
- 2 large bedroom suites
- 3 reception rooms
- Exceptional 40ft open plan living space
- Secluded well stocked gardens
- Extensive driveway and detached garage





Services

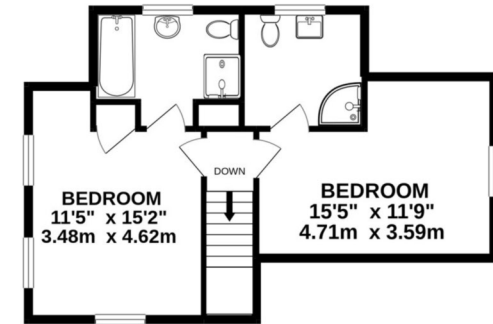
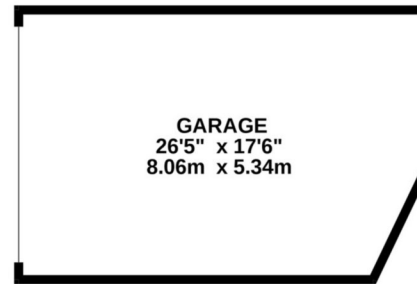
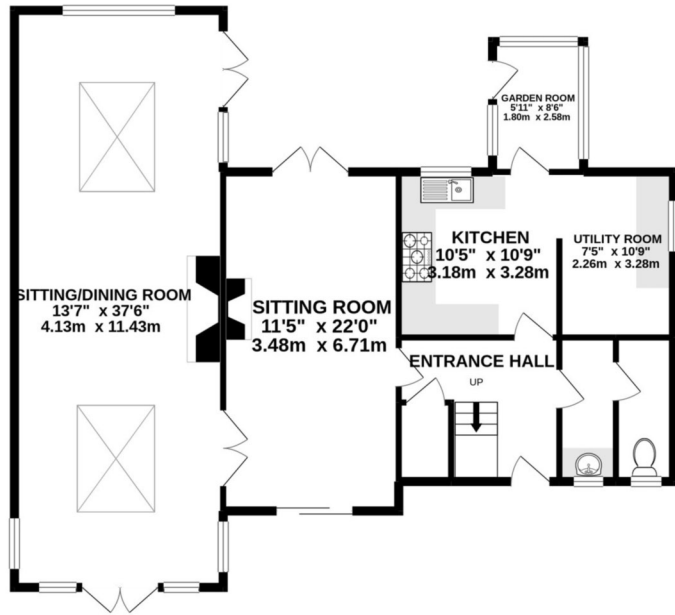
Water, gas, electricity and mains drainage are connected.
Please note that none of the services or appliances have been tested by Pegasus.

Council Tax

Arun District Council Tax: Band F

Viewings by appointment only

Please contact Pegasus on 01243 940940 or call into our office to arrange a viewing of this property.



TOTAL FLOOR AREA : 2089 sq.ft. (194.0 sq.m.) approx.

Whilst every attempt has been made to ensure the accuracy of the floorplan contained here, measurements of doors, windows, rooms and any other items are approximate and no responsibility is taken for any error, omission or mis-statement. This plan is for illustrative purposes only and should be used as such by any prospective purchaser. The services, systems and appliances shown have not been tested and no guarantee as to their operability or efficiency can be given.

Made with Metropix ©2020

Pegasus Properties

39 Barnham Road, Barnham, West Sussex PO22 0ER

01243 940940 barnham@pegasusproperties.co.uk pegasusproperties.co.uk