



Millers Cottage, 198a Fitzalan Road
Arundel, West Sussex, BN18 9JZ

Millers Cottage, 198a Fitzalan Road

The approach to this stunning character cottage is via Fitzalan Road, a popular location within easy striking distance of the historic market town, including its eclectic mix of shops, restaurants and railway station, which is direct to London Victoria. Millers Cottage resting at the end of the road with stunning rural views. The spacious accommodation comprises of three double bedrooms, two reception rooms and a stunning kitchen/breakfast room. This period home has undergone a schedule of updating whilst retaining its charm. The rear gardens are secluded with stunning far reaching rural views. There is also ample parking to the front of the property, large enough for several cars.

- Popular location
- Stunning rural views
- Period features
- 3 bedrooms
- 2 reception rooms
- Kitchen/living space
- Secluded gardens
- Parking





Services

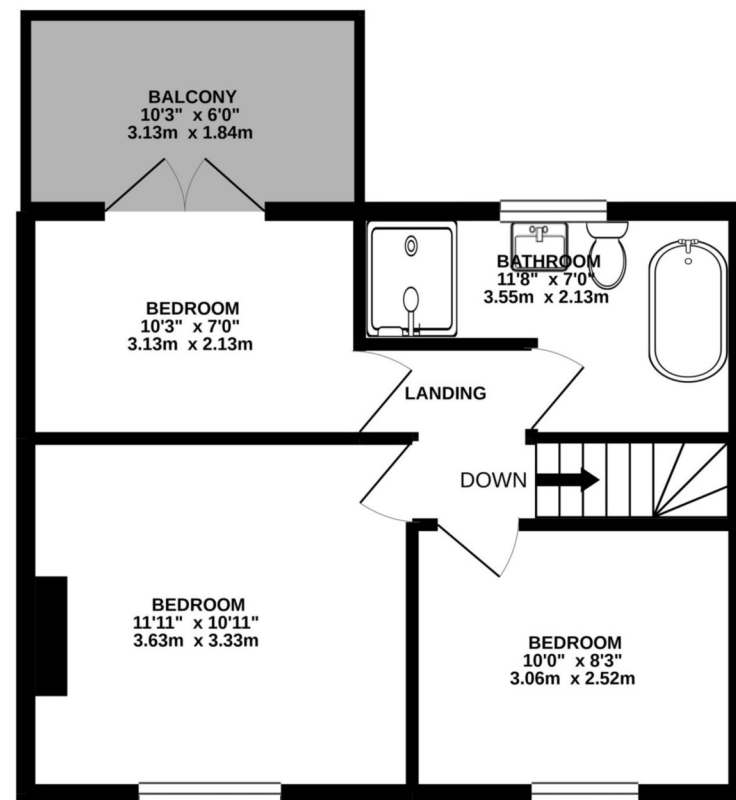
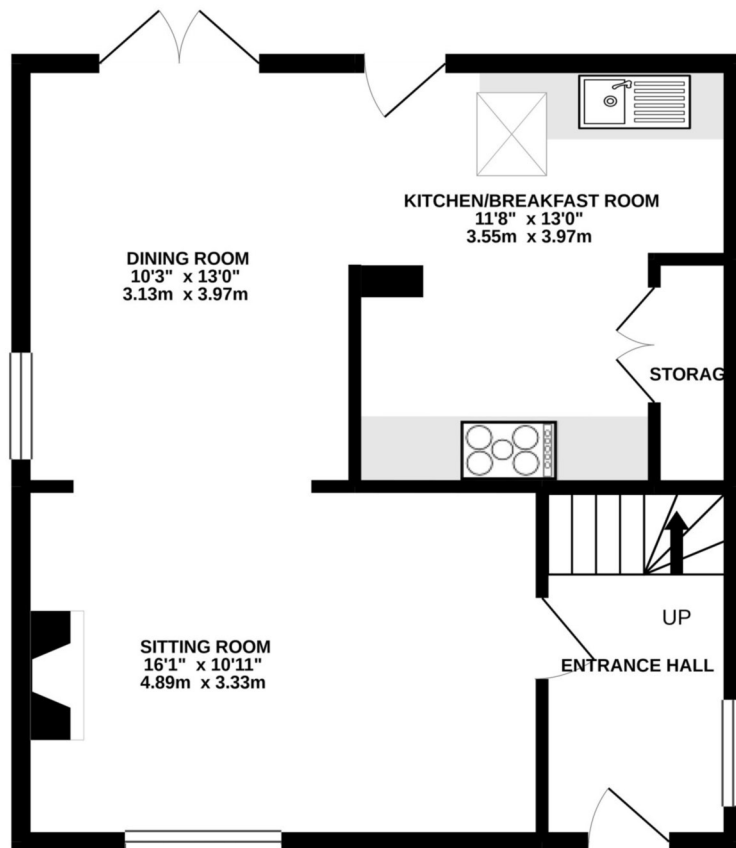
Water, gas, electricity and mains drainage are connected.
Please note that none of the services or appliances have been tested by Pegasus.

Council Tax

Arun District Council Tax: Band E

Viewings by appointment only

Please contact Pegasus on 01243 940940 or call into our office to arrange a viewing of this property.



TOTAL FLOOR AREA : 906 sq.ft. (84.2 sq.m.) approx.

Whilst every attempt has been made to ensure the accuracy of the floorplan contained here, measurements of doors, windows, rooms and any other items are approximate and no responsibility is taken for any error, omission or mis-statement. This plan is for illustrative purposes only and should be used as such by any prospective purchaser. The services, systems and appliances shown have not been tested and no guarantee as to their operability or efficiency can be given.

Pegasus Properties

39 Barnham Road, Barnham, West Sussex PO22 0ER

01243 940940 barnham@pegasusproperties.co.uk pegasusproperties.co.uk