



11 Wheelwrights Close, Arundel, West Sussex, BN18 9TA



11 Wheelwrights Close, Arundel, West Sussex, BN18 9TA

Situated in the heart of the historic market town of Arundel is this well presented three bedroom maisonette. The property is offered to the market in immaculate condition with deceptively spacious accommodation arranged over two floors. The property also benefits from a low maintenance garden & parking for two cars in a private car park.

Leasehold · 3 bedrooms · 3 bathrooms · Open plan reception rooms · Allocated parking · Courtyard garden

Description

A beautifully presented three bedroom maisonette situated in a very central and convenient location within the historic market town of Arundel. This spacious, light and airy property will suit a plethora of buyers. The accommodation is arranged over two floors. The first floor welcomes you into a large, light and airy sitting room/diner that leads into a kitchen with a range of integrated appliances and access to a Juliet balcony via double doors. Completing the first floor is a double guest bedroom which offers access to another Juliet balcony.

The second floor offers you a generous size master bedroom with a very pretty bay window and en-suite bathroom. The remainder of this floor is made up of a shower room and a third bedroom currently used as a reception room.

Of particular note with this property is that it has been fitted with plantation shutters throughout, and the majority of the windows and doors have been triple glazed for improved energy efficiency. The views of Arundel Cathedral also make this a unique proposition.

Outside the property offers a low maintenance courtyard including a summer house with power. The property also benefits from parking for two cars situated in a private car park.





Services

Water, electricity and mains drainage are connected. Please note that none of the services or appliances have been tested by Pegasus.

Council Tax

Arun Council Tax: Band F

Reference

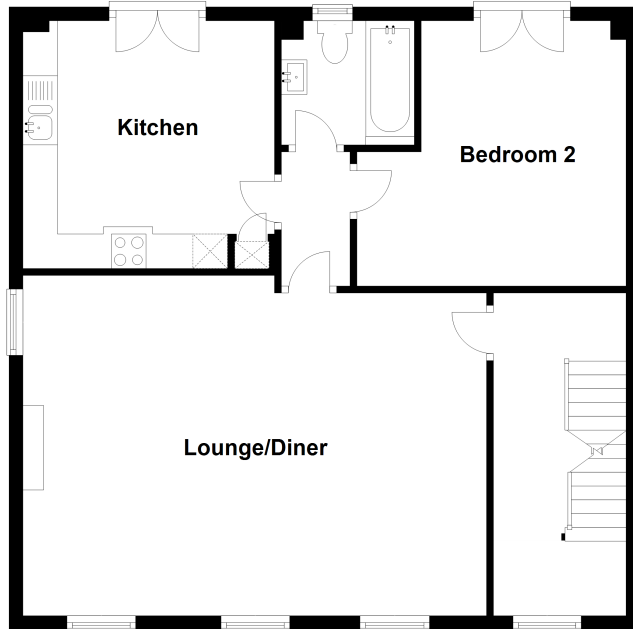
11WHEEL

Viewings by appointment only

Please contact Pegasus on 01243 940940 or call into our office to arrange a viewing of this property.

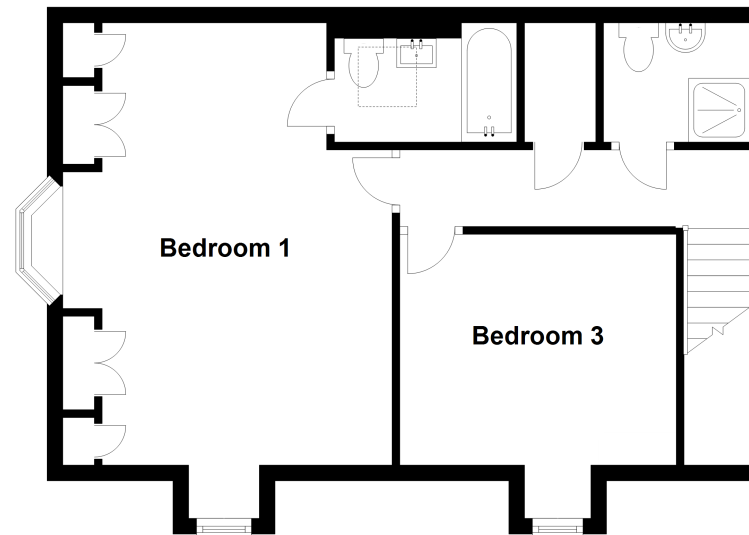
First Floor

Approx. 75.2 sq. metres (809.4 sq. feet)



Second Floor

Approx. 50.3 sq. metres (541.0 sq. feet)



Pegasus Properties

39 Barnham Road, Barnham, West Sussex PO22 0ER

01243 940940 barnham@pegasusproperties.co.uk pegasusproperties.co.uk