



Flat 1 Tower House, London Road
Arundel, West Sussex, BN18 9BH

Flat 1 Tower House, London Road

Situated in the heart of the historic market town of Arundel is this spacious three bedroom period home having been updated by the current owner, with high ceilings, period features, private gardens, and unlike most town centre properties, this exceptional home also benefits from parking and a garage.

Leasehold · 3 double bedrooms · En-suite shower room · Kitchen/dining room · Private garden · Garage & parking

Description

Situated in the heart of the historic market town of Arundel is this spacious three bedroom period home. With high ceilings, period features, private courtyard garden, and unlike most town centre properties, this exceptional home also benefits from off road parking and a garage.

The approach is via stone steps leading to a grand hallway and private entrance. On entering the spacious reception hall there are several storage cupboards and a W.C.

The light and spacious kitchen/dining room overlooks the castle walls and St. Nicholas church. Enjoying the southerly aspect is the large sitting room with its high ceilings and feature fireplace. The large south facing bay window offers pretty views over the private courtyard garden and communal grounds.

A turning stair case takes you to another good sized hall where the three double bedrooms and family bathroom are accessed. The master bedroom suite benefits from an en-suite shower room, whilst the second bedroom has access to a partly covered private courtyard and log store. From this floor there is direct access to the communal laundry area (laundry facilities also within the apartment), which is operated within the costs of the maintenance, and also a large private storeroom.

There are well maintained communal gardens along with a large south facing private courtyard garden. The property also benefits from parking and a garage with power and light.





Services

Water, gas, electricity and mains drainage are connected.
Please note that none of the services or appliances have been tested by Pegasus.

Council Tax

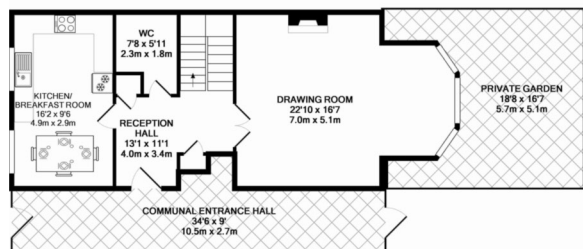
Arun District Council Tax: Band D

Reference

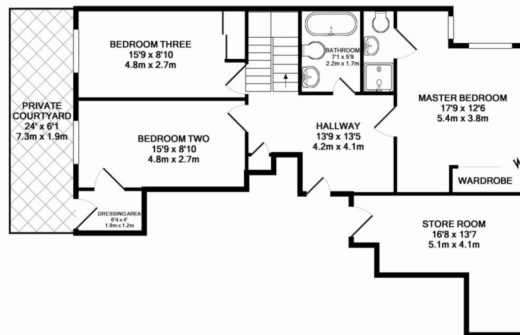
PEG - 1tow

Viewings by appointment only

Please contact Pegasus on 01243 940940 or call into our office to arrange a viewing of this property.



GROUND FLOOR
APPROX. FLOOR
AREA 766 SQ. FT.
(71.2 SQ. M.)



LOWER GROUND FLOOR
APPROX. FLOOR
AREA 847 SQ. FT.
(78.7 SQ. M.)

TOTAL APPROX. FLOOR AREA 1613 SQ. FT. (149.9 SQ. M.)

Whilst every attempt has been made to ensure the accuracy of the floor plan contained herein, measurements of doors, windows, rooms and any other items are approximate and no responsibility is taken for any error, omission, or mis-statement. This plan is for illustrative purposes only and should be used as such by any prospective purchaser. The services, systems and appliances shown have not been tested and no guarantee as to their operability or efficiency can be given.

Made with Metropix 62015



Pegasus Properties

39 Barnham Road, Barnham, West Sussex PO22 0ER

01243 940940 barnham@pegasusproperties.co.uk pegasusproperties.co.uk

