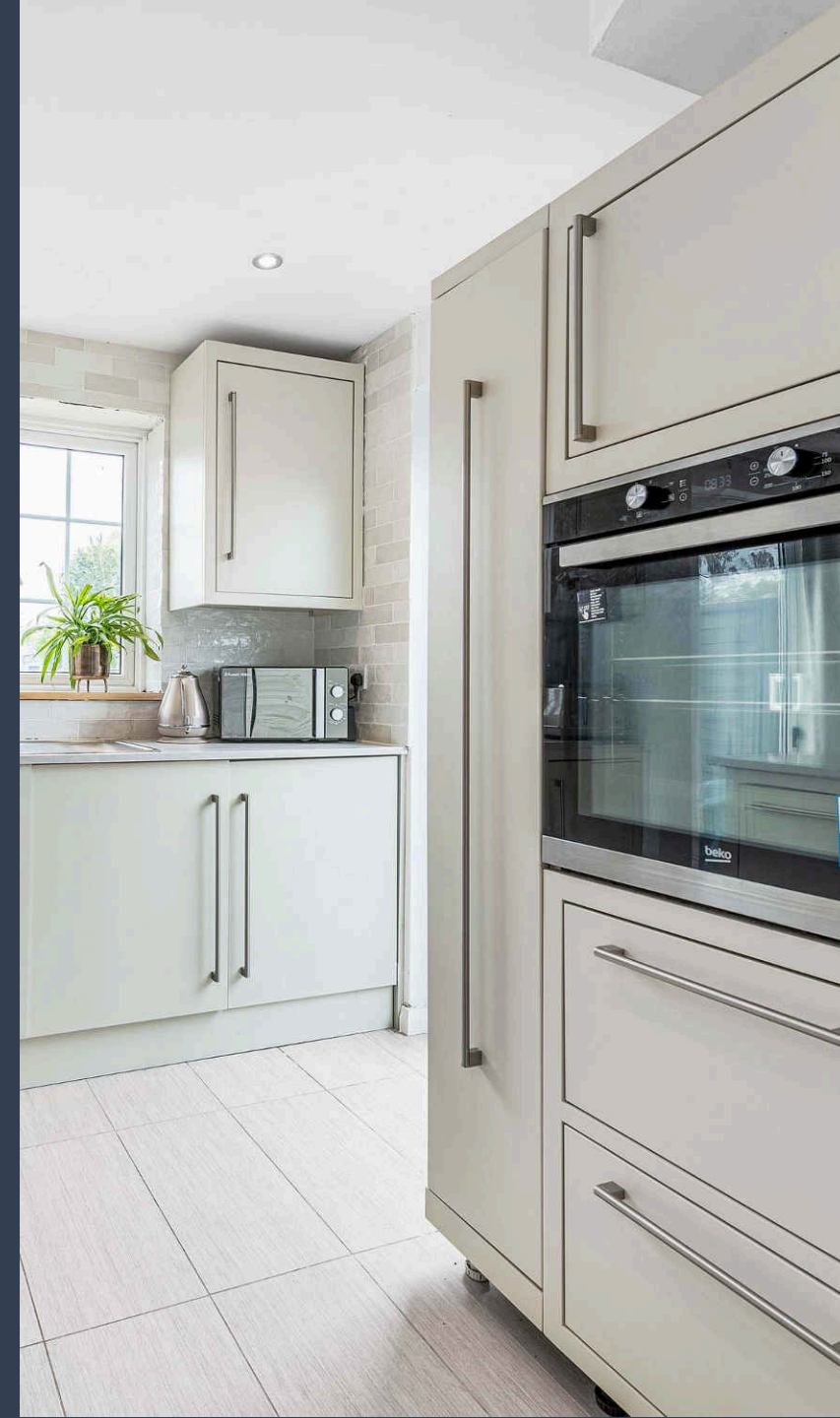




20 St. Georges Walk  
Eastergate  
Chichester  
PO20 3XT



01243 940940 | [barnham@pegasusproperties.co.uk](mailto:barnham@pegasusproperties.co.uk)  
[www.pegasusproperties.co.uk](http://www.pegasusproperties.co.uk)







3 Bedroom Semi-Detached House  
Offers In Excess Of £325,000 Freehold



## 20 St. George's Walk, Eastergate, Po20 3XT

Approximate Gross Internal Area = 730 sq ft / 67.9 sq m  
Garage = 121 sq ft / 11.3 sq m  
Total = 851 sq ft / 79.2 sq m

GARTON JONES  
LONDON



### Floor Plan:

- Chain free
- Gated rear garden
- Bright and airy feel
- Well-presented throughout
- Refitted kitchen
- 3 bedrooms
- Family bathroom
- Ground floor cloakroom
- Garage and parking

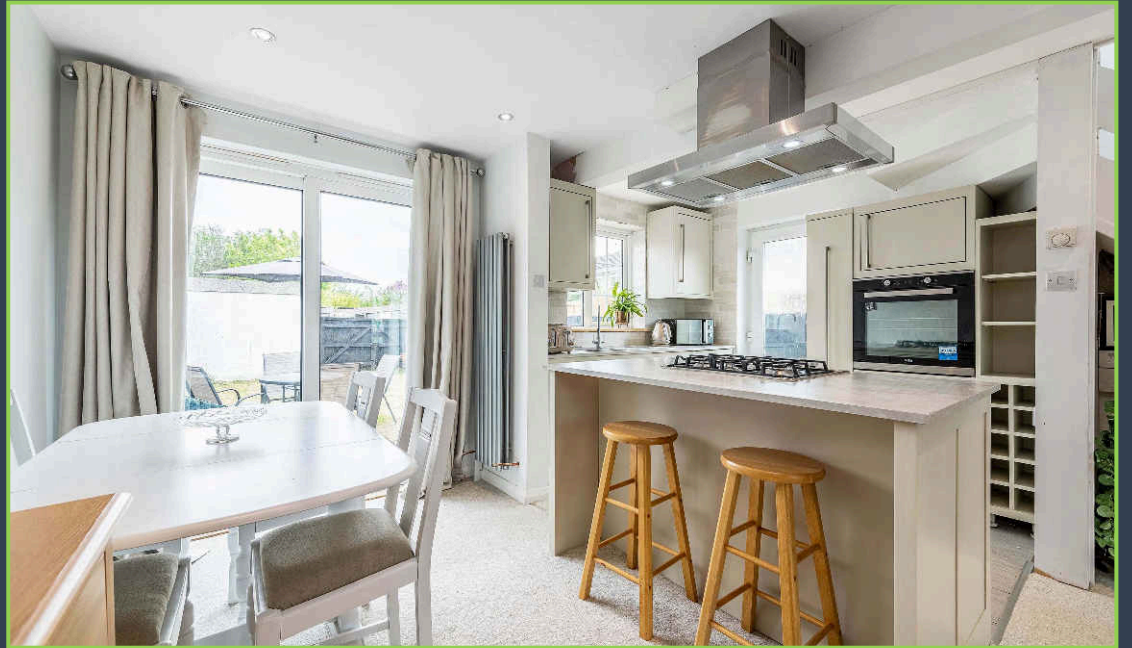


This plan is not to scale and must be used as layout guidance only. All measurements and areas are approximate and should not be relied upon to provide accurate information. This plan must not be relied upon when making property valuations, design considerations or any other such relevant decisions. We accept no responsibility or liability (whether in contract, tort or otherwise) in relation to any loss whatsoever arising from or in connection with any use of this plan or the adequacy, accuracy or completeness of it or any information within it.

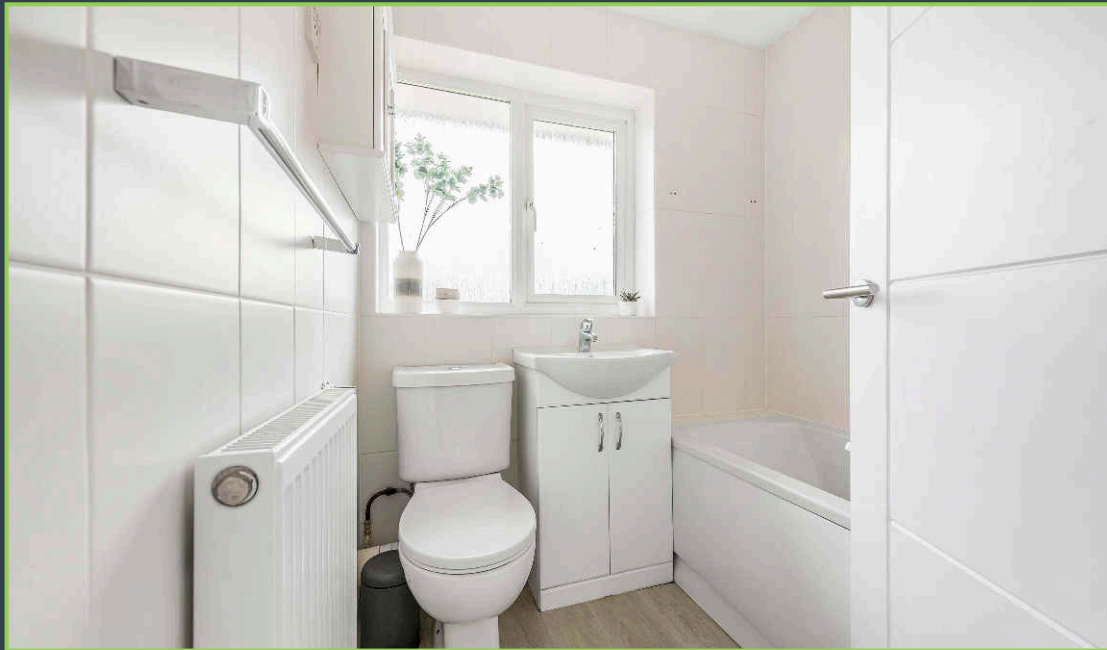












## The Property:

Located at the end of a quiet cul-de-sac sits this exceptionally well presented three-bedroom semi-detached property. In recent times the property has undergone a high level of renovation throughout and is being offered to the market with no onward chain.

The accommodation is arranged over two floors. The ground floor comprises a cloakroom, an open plan kitchen/dining/living space with sliding doors looking out onto the rear garden. On the second floor there are two double bedrooms, a smaller third and a family bathroom.

To the front of the property is an area of lawn and a path leading to the front door. The rear garden is laid to lawn and offers a good degree of privacy. A very useful feature to this property is that the rear garden can be accessed via large double gates from the garage compound which is to the rear of the property. This area also works as a parking space for the property and neighbours the garage which is situated in a block.

---

## The Location:

The village of Eastergate is situated east of the Cathedral City of Chichester. The area has a very good choice of schools and the village itself has an excellent range of local amenities which include a convenience store, post office, doctor's surgery and petrol station. Stunning rural walks are easily accessible from the property and there is a cycle path within the village. The village of Barnham lies a short distance away and has an active village hall, a number of small shops and a mainline station which serves Gatwick Airport, London (Victoria), Portsmouth and Brighton.

Comprehensive facilities may be found in Chichester with a wide selection of shops, superstores, restaurants and bars. The surrounding area offers a variety of recreational facilities including a number of golf courses, one of which being at Goodwood, which also provides a country club with gym, indoor swimming pool and tennis courts. Famous for its horse racing, Goodwood also plays host to the Annual Festival of Speed and the Revival of this historic motor circuit, both of which have become prominent events on the social calendar.

To the south the waters of Chichester Harbour and the Solent provide some of the most popular sailing facilities within easy reach of London. Most notably there are sailing clubs at Itchenor, Bosham and Chichester Marina. The beaches at East Head and West or East Wittering provide many opportunities for bathing, windsurfing, kiteboarding and more recently land-boarding.

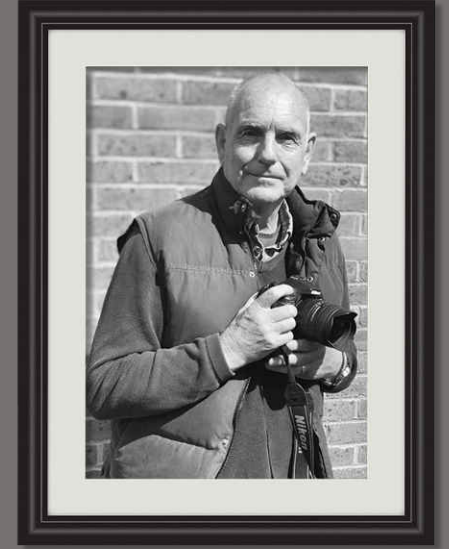
The South Downs National Park to the north is home to a variety of pretty rural villages with good country pubs and provides many opportunities for walking, riding and mountain biking.

### Property Information

**Services:** Mains gas, electricity, water and drainage. Broadband available

**Council Tax:** Arun District Council, Maltravers Road, Littlehampton. Tel: 01903 737500 Council Tax Band C

# Welcome to Pegasus Properties



## About us...

From large country estates to coastal properties, cottages, investments and family homes, our team has over 90 years experience in delivering outstanding client care. Our aim is to always provide you with a friendly, knowledgeable and unrivalled level of service. We place great emphasis on providing a modern, bespoke, personal and highly professional experience at Pegasus Properties and we are dedicated to delivering the very best results for all our clients.



Professionalism, Quality, Responsiveness, Value



“ Peter and Nick made what was the most impossible chain a reality. We sold in no time at all at over asking price and Peter made it his daily objective to take matters in his own hands to get the job done! Would use again in a heartbeat! ”

Clare P

“Pegasus have been a joy to deal with. Peter was great with advice and guidance at the start when placing the property on the market, followed by Nick who has provided continuing helpful support throughout the selling process. Friendly service with consistently excellent communication. Nick particularly would investigate any bumps in the road & work with all parties to find a resolution. Would not hesitate to recommend, keep doing what you do! Many thanks.”

Alison S

“We highly recommend Nick who was so professional and efficient in selling our home. After agreeing the sale he was always in regular contact with updates and reachable to discuss any questions we had. Thank you to not only Nick but also Peter, Carol and Richard at Pegasus for everything. We don't want to move anytime soon because we love our new house but if we did we would certainly use Nick and Pegasus again.”

Matt R

“Nick and the team at Pegasus are just brilliant! They managed the sale of 2 family properties and the service they gave was outstanding. During such a stressful time Nick was so reassuring, informative, professional and caring. He kept us updated weekly with the chain progression. Would recommend ( and have done!) 110%. Well done so pleased to have sold with Pegasus!”

Abi E

## Traditional values

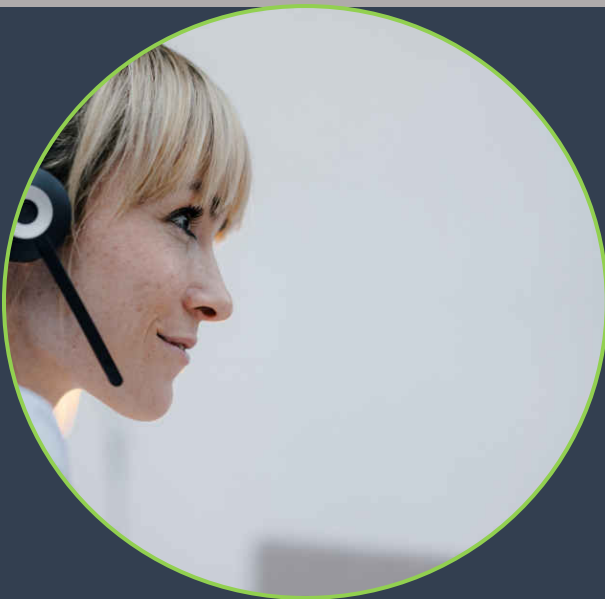
First and foremost we believe in communication and great customer care. We don't want you to feel like you're being passed from pillar to post and getting frustrated with the lack of answers when you need them. Every single one of our team is on hand to help. We take great pride in making sure you are informed about everything concerning your house move as soon as it happens.



## Professional Service

You only get once chance to make a first impression and when it comes to property we want to make you stand out. Every property is special in its own way and we always look for the unique character which makes it shine above the rest. All of our properties benefit from professional photography, too many hours scrolling through the internet has taught us that the care and attention we pay to your home will help attract more attention over the competition.

We love what we do and we want you to enjoy the experience just as much as we do.



## Modern Technology

Our approach has always been to stay at the forefront of technology, that said we believe in utilising it in the right way. From the latest management systems through to our comprehensive marketing methods, we make sure everything we have in place, benefits you! Our systems track the progress of your sale from start to finish and alert us throughout the process if things are taking longer than they should. Our marketing methods include advertising across the UK's major property websites, niche property platforms and exclusive magazines. Whether it's a 2 bedroom end of terrace or a grand country home, we have every angle covered.





# Your local Property Professional



01243 940940 | [barnham@pegasusproperties.co.uk](mailto:barnham@pegasusproperties.co.uk)  
[www.pegasusproperties.co.uk](http://www.pegasusproperties.co.uk)