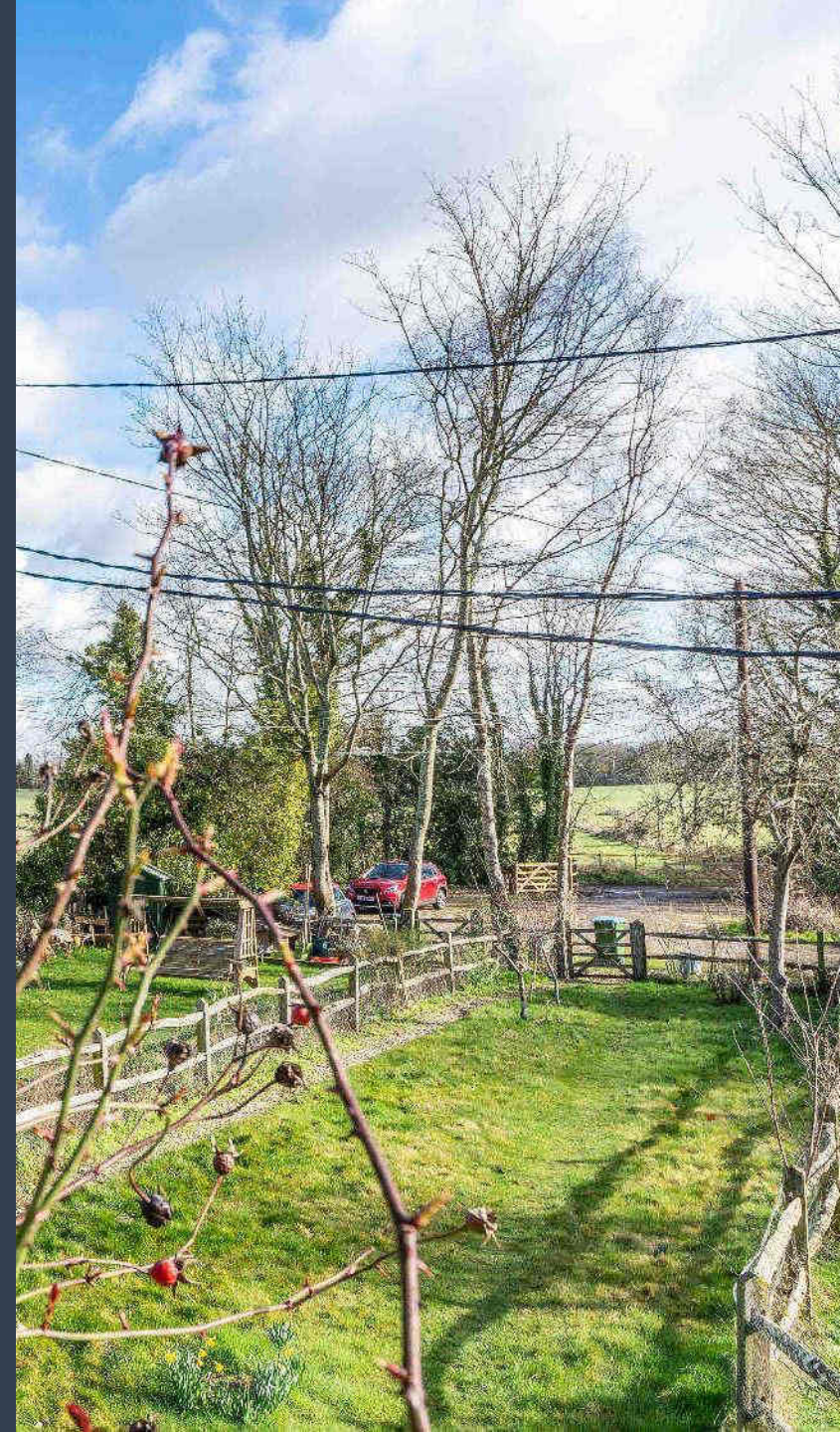




24 Park Farm Cottages  
Chichester Road  
Arundel  
BN18 0AQ



01243 940940 | [barnham@pegasusproperties.co.uk](mailto:barnham@pegasusproperties.co.uk)  
[www.pegasusproperties.co.uk](http://www.pegasusproperties.co.uk)





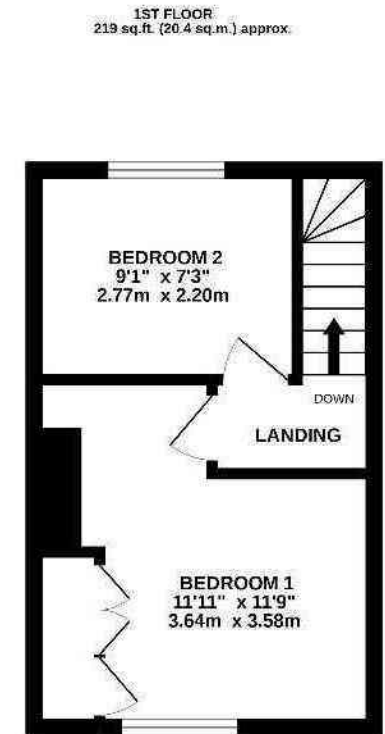
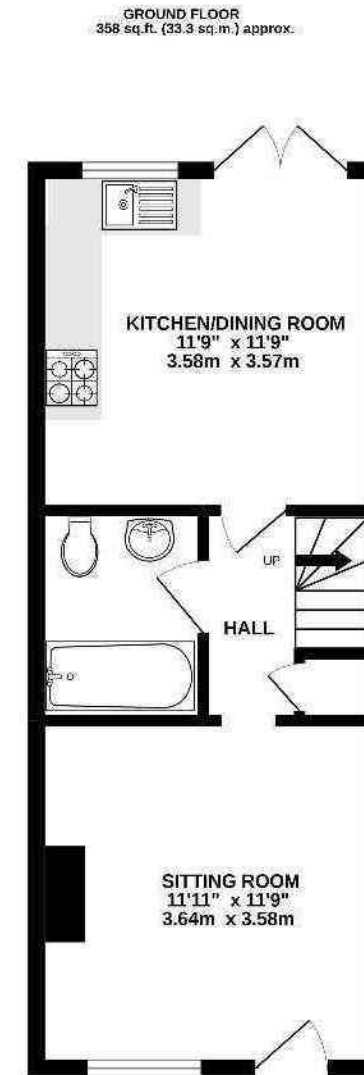


2 Bedroom Flint Fronted Cottage  
£450,000 Freehold



## Floor Plan:

- Charming flint fronted home
- Historic Norfolk Estate cottage
- Brought to the market for the first time
- Picturesque views
- 2 bedrooms
- Kitchen/diner with views of rear garden
- Chain free

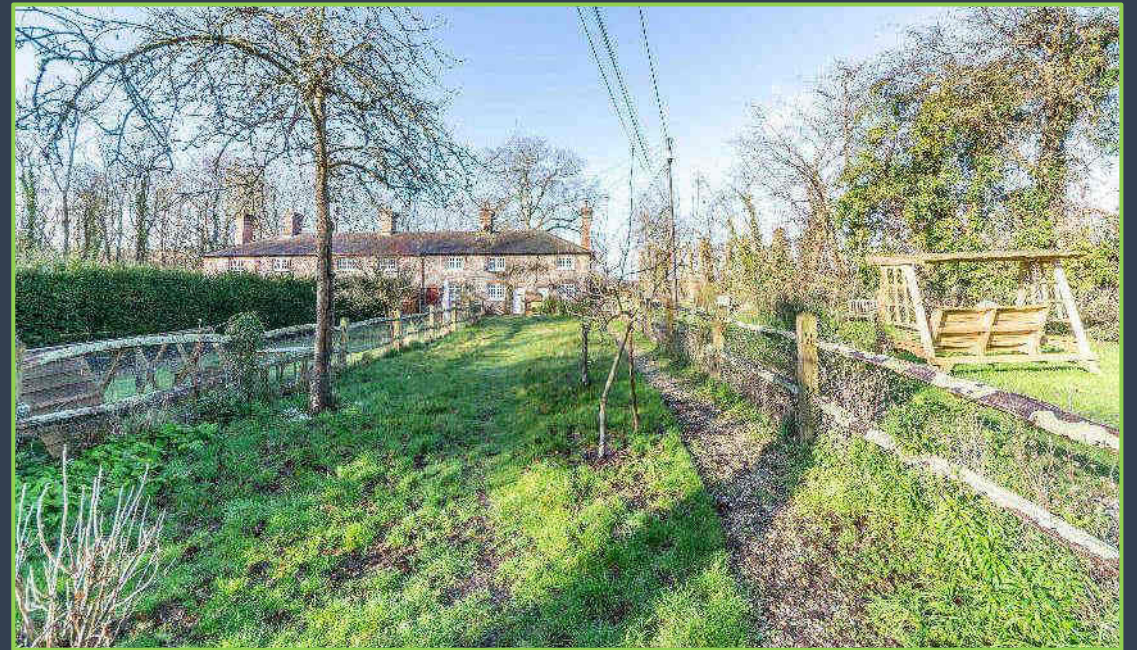


**TOTAL FLOOR AREA : 577 sq.ft. (53.6 sq.m.) approx.**

Whilst every attempt has been made to ensure the accuracy of the floorplan, cannot hold any measurements, of doors, windows, stairs and any other items are approximate and no responsibility is taken for any error, omission or discrepancy. This plan is for illustrative purposes only and should be used as such by any prospective purchaser. The services, systems and appliances shown have not been tested and no guarantee as to their operability or efficiency can be given.  
Please call 01462 440000 for more details.











## The Property:

A picturesque, flint fronted Duke of Norfolk Estate cottage, located in a semi-rural location, within 14 miles of historic market town of Arundel and brought to the market for the very first time.

The accommodation is arranged over two floors with the ground floor comprising of a sitting room with a brick hearth, modern bathroom, spacious kitchen/ diner with attractive exposed original flint wall and views onto the rear garden through French doors.

The first floor offers two generous bedrooms, with the master bedroom benefitting from a range of fitted cupboards and views of the front garden, with the guest bedroom enjoying stunning views over the surrounding farm land.

Externally, the property has a secure low maintenance rear garden with a decked area, mature beds and a rear gate offering access straight out to rural walks. To the front of the property are the lawned gardens, surrounded by a picket fence with a shingle path leading to the front door.

The property also boasts parking to the front for a number of vehicles.

---

## The Location:

The Cathedral town of Arundel with its impressive Norman castle sits on the boundary of the South Downs National Park. Consistently considered as one of the finest towns in the country and made famous internationally for its antique dealerships. Once a thriving fishing town, the public houses and fisherman's cottages have made way for traditional tearooms, boutiques and an eclectic mix of independent restaurants. Now well known for its numerous festivals throughout the year including the Art trail, Food Festival and Arundel by Candlelight.

There is a wide choice of sporting and recreational activities in the surrounding area including horse racing at both Goodwood and Fontwell park; Car Racing at Goodwood Motor Circuit famously hosting its annual Festival of Speed and Revival meetings; polo at Cowdray park; glorious beaches at the Witterings; dinghy sailing from numerous clubs along the coast with substantial harbours and marinas at Chichester and Littlehampton for mooring larger yachts; numerous golf courses; walking and riding in the rich surrounding countryside.

### Property Information

**Services:** Mains gas, electricity, water and drainage. Broadband available

**Council Tax:** Arun District Council, Maltravers Road, Littlehampton. Tel: 01903 737500 Council Tax Band C

# Welcome to Pegasus Properties



## About us...

From large country estates to coastal properties, cottages, investments and family homes, our team has over 90 years experience in delivering outstanding client care. Our aim is to always provide you with a friendly, knowledgeable and unrivalled level of service. We place great emphasis on providing a modern, bespoke, personal and highly professional experience at Pegasus Properties and we are dedicated to delivering the very best results for all our clients.



Professionalism, Quality, Responsiveness, Value



“ Peter and Nick made what was the most impossible chain a reality. We sold in no time at all at over asking price and Peter made it his daily objective to take matters in his own hands to get the job done! Would use again in a heartbeat! ”

Clare P

“Pegasus have been a joy to deal with. Peter was great with advice and guidance at the start when placing the property on the market, followed by Nick who has provided continuing helpful support throughout the selling process. Friendly service with consistently excellent communication. Nick particularly would investigate any bumps in the road & work with all parties to find a resolution. Would not hesitate to recommend, keep doing what you do! Many thanks.”

Alison S

“We highly recommend Nick who was so professional and efficient in selling our home. After agreeing the sale he was always in regular contact with updates and reachable to discuss any questions we had. Thank you to not only Nick but also Peter, Carol and Richard at Pegasus for everything. We don't want to move anytime soon because we love our new house but if we did we would certainly use Nick and Pegasus again.”

Matt R

“Nick and the team at Pegasus are just brilliant! They managed the sale of 2 family properties and the service they gave was outstanding. During such a stressful time Nick was so reassuring, informative, professional and caring. He kept us updated weekly with the chain progression. Would recommend ( and have done!) 110%. Well done so pleased to have sold with Pegasus!”

Abi E



## Traditional Values

First and foremost we believe in communication and great customer care. We don't want you to feel like your being passed from pillar to post and getting frustrated with the lack of answers when you need them. Every single one of our team is on hand to help. We take great pride in making sure you are informed about everything concerning your house move as soon as it happens.



## Professional Service

You only get once chance to make a first impression and when it comes to property we want to make you stand out. Every property is special in its own way and we always look for the unique character which makes it shine above the rest. All of our properties benefit from professional photography, too many hours scrolling through the internet has taught us that the care and attention we pay to your home will help attract more attention over the competition.

We love what we do and we want you to enjoy the experience just as much as we do.



## Modern Technology

Our approach has always been to stay at the forefront of technology, that said we believe in utilising it in the right way. From the latest management systems through to our comprehensive marketing methods, we make sure everything we have in place, benefits you! Our systems track the progress of your sale from start to finish and alert us throughout the process if things are taking longer than they should. Our marketing methods include advertising across the UK's major property websites, niche property platforms and exclusive magazines. Whether it's a 2 bedroom end of terrace or a grand country home, we have every angle covered.





# Your local Property Professional



01243 940940 | [barnham@pegasusproperties.co.uk](mailto:barnham@pegasusproperties.co.uk)  
[www.pegasusproperties.co.uk](http://www.pegasusproperties.co.uk)